



Dough Troughs

Topos can supply heavy duty, stainless steel dough troughs (SSDT) in a variety of sizes and with various features. The chart on the back page shows general sizing available and customization options.

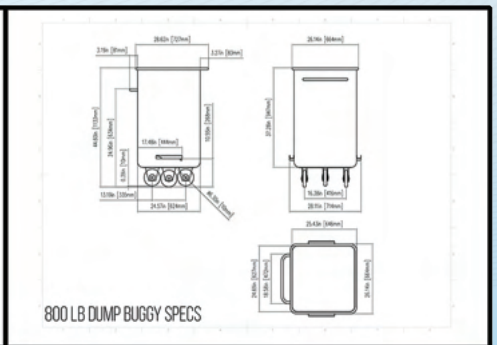
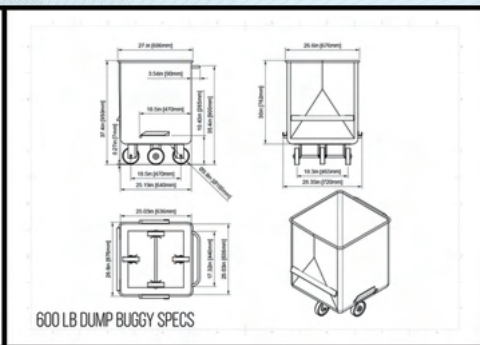
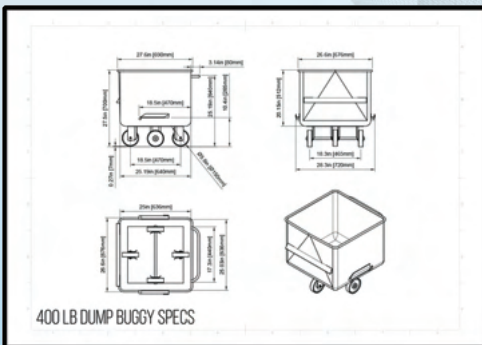
We can offer troughs with optional drop sides, controlled flow end gates, lifting pockets or hooks, pouring lips, and more. They are made in heavy duty stainless steel with all sanitary welds and polished edges. The four [4] swivel casters are heavy duty and sanitary designed units for long life and ease of mobility under load.



Trough with the "controlled flow end gate" and lifting rings

Standard Features

MODEL	Overall Dimensions LxWxH	Inside Dimensions LxWxD	Caster Size	ft ³ Capacity	Sponge Dough Capacity @ 13 lb./ft ³ *	Straight Dough Capacity @ 40 lb./ft ³ **	Final Dough Capacity @ 69 lb./ft ³ ***	Approximate Shipping Weight
DT-124	4' 4" X 30 X 26 3/4"	4' X 26 X 21"	4"	13.5	176 lb.	540 lb.	932 lb.	280 lb.
DT-126	6' 4" X 30 X 26 3/4"	6' X 26 X 21"	4"	20	260 lb.	800 lb.	1,380 lb.	355 lb.
DT-128	8' 4" X 30 X 26 3/4"	8' X 26 X 21"	4"	27	351 lb.	1,080 lb.	1,863 lb.	430 lb.
DT-1210	10' 4" X 30 X 27 5/8"	10' X 26 X 21"	5"	33.5	436 lb.	1,340 lb.	2,312 lb.	510 lb.
DT-1212	12' 4" X 30 X 27 5/8"	12' X 26 X 21"	5"	40.5	527 lb.	1,620 lb.	2,795 lb.	580 lb.
DTX-126	6' 4" X 35 1/2" X 30 3/8"	6' X 31 1/2" X 23 3/4"	5"	28	364 lb.	1,120 lb.	1,932 lb.	460 lb.
DTX-128	8' 4" X 35 1/2" X 30 3/8"	8' X 31 1/2" X 23 3/4"	5"	38	494 lb.	1,520 lb.	2,622 lb.	545 lb.
DTX-1210	10' 4" X 35 1/2" X 31 3/8"	10' X 31 1/2" X 23 3/4"	6"	47	611 lb.	1,880 lb.	3,243 lb.	630 lb.
DTX-1212	12' 4" X 35 1/2" X 31 3/8"	12' X 31 1/2" X 23 3/4"	6"	56.5	735 lb.	2,260 lb.	3,899 lb.	715 lb.
DTXL-126	6' 4" X 35 1/2" X 40 3/8"	6' X 31 1/2" X 33 3/4"	5"	39	507 lb.	1,560 lb.	2,691 lb.	590 lb.
DTXL-128	8' 4" X 35 1/2" X 40 3/8"	8' X 31 1/2" X 33 3/4"	5"	53	689 lb.	2,120 lb.	3,657 lb.	690 lb.
DTXL-1210	10' 4" X 35 1/2" X 41 3/8"	10' X 31 1/2" X 33 3/4"	6"	66	858 lb.	2,640 lb.	4,554 lb.	795 lb.
DTXL-1212	12' 4" X 35 1/2" X 41 3/8"	12' X 31 1/2" X 33 3/4"	6"	79	1,027 lb.	3,160 lb.	5,451 lb.	895 lb.



Wire cut cookie dough trough with control flow bottom gate. Mobile cart can be fabricated to your exact dimensions.



Optional 'Drop-side' sponge trough with heavy duty, one-handed latch operation.

toposmondial.com

600 Queen St. Pottstown, PA, USA +1-610-970-2270

