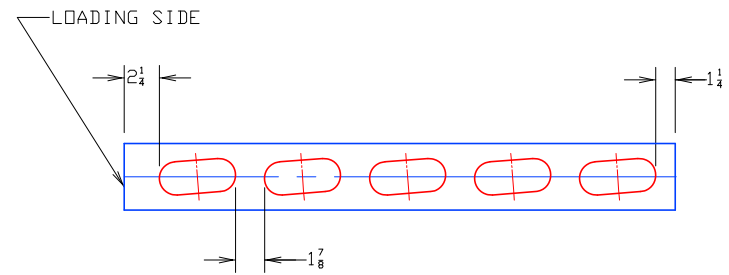


LARGE SIZE  
 WIDTH: 1 3/4" - 2 1/4"  
 LENGTH: 5' - 5 3/8"  
 HEIGHT: 3/8" - 5/8"  
 RATE: 5 PIECES/TRAY @ 40 TRAYS/MIN = 200 PIECES/MIN



SMALL SIZE  
 WIDTH: 1 5/8" - 2 1/8"  
 LENGTH: 4 1/2" - 4 7/8"  
 HEIGHT: 3/8" - 5/8"  
 RATE: 5 PIECES/TRAY @ 40 TRAYS/MIN = 200 PIECES/MIN

NOTE:  
 SWITCH SELECTION ALLOWS 5 OR 6 CUTS PER TRAY. HOWEVER, GMI RECOMMENDS ONLY 5 PRODUCTS PER TRAY DUE TO THE SIZE OF YOUR PRODUCTS.

EXPECTED PRODUCT PATTERN ON PROOFER TRAY

FOR GMI HONEYBUN GUILLOTINE & PROOFER TRAY LOADER

TASTY BAKING OXFORD, INC  
 OXFORD, PA

002

GRAYBILL MACHINES INC. CUSTOM MACHINERY DESIGNERS & BUILDERS 221 WEST LEXINGTON ROAD, LITITZ, PA. 17543-9400 TELEPHONE 717/626-5221 FAX 626-1886	TITLE	GMI, 15781, PRODUCT PATTERN		
	DRAWN BY	K. POPMA	DATE	12-14-00
	JOB NO.	15781-01	SCALE	